

## Case Study



“This project was a major milestone that needs to be celebrated, & we want CSUSA to be recognized. The completion of the energy plant & distribution loop with the new heat pump chiller heater is a rare example of using infrastructure savings to fund mission-based projects.”

Mark Kennedy,  
Vice Chancellor Campus Operations,  
UAMS

### Project Summary

#### Name

University of Arkansas for  
Medical Sciences District  
Energy System

**Market**  
Healthcare

**Location**  
Little Rock, Arkansas

# University of Arkansas for Medical Sciences District Energy System

## The Challenge

The University of Arkansas for Medical Sciences (UAMS) in Little Rock, Arkansas needed funds for a \$50 million upgrade and expansion project. Savings for the project were expected to exceed \$8,000 per day. UAMS wanted to use a comprehensive commissioning process on existing and new building infrastructure. Comfort Systems USA Energy Services was selected by UAMS to provide the commissioning.



The UAMS campus, located in Little Rock, Arkansas is a state-supported academic medical center consisting of approximately 50 individual buildings including academic, research, laboratory, and acute care hospital spaces.

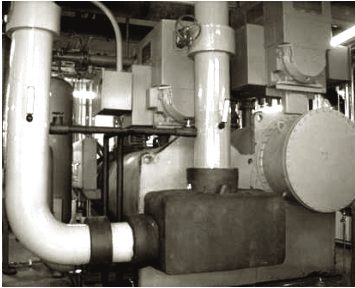
## The Solution

The CSUSA Team:

- Ensured the project’s success by implementing the American Society of Healthcare Engineers (ASHE) commissioning process, one of the first in the U.S. to follow these guidelines.
- Facilitated the development of operational dashboards to provide immediate insight into daily operations.
- Provided functional testing on the largest heat pump chiller installation in the U.S.

## Case Study

# University of Arkansas for Medical Sciences District Energy System



In 2004, UAMS began a period of growth with more than \$400 million in construction of new facilities or expansion projects, with the emphasis of improving patient care, research and education services, and energy efficiency. This period of growth continues today with future planned improvements on the campus.

## A Closer Look

The CSUSA team engaged on this innovative project through an existing relationship as a successful commissioning provider with UAMS.

Commissioning selection for this project included competition amongst many large national healthcare commissioning providers.

CSUSA worked directly for the owner ensuring success by implementing the ASHE commissioning process. This commissioning effort covered a central energy plant expansion, district energy distribution equipment, energy management controls and all building connections.

## The Nation's Premier Mechanical Systems Installation and Services Provider



**Contact us. We can help you.**

Phone: 713-830-9600

HVAC@comfortsystemsusa.com

comfortsystemsusa.com

Protected by copyright and trademark laws under U.S. and International law.

All rights reserved. ©2013 Comfort Systems USA®

All other trademarks are the property of their respective owners.